



Dear Families,

We wish you all the very best for a great Week 10, where celebrating the social, emotional and academic learning growth of our students in partnership with families is the focus.

- Thankyou for ensuring you have your bookings confirmed through your COMPASS login for this **Thursday, June 25** and don't hesitate to call our office if you would like assistance with this process.
- **Important reminder that there will be no classes for students on Thursday.**
- **Friday dismissal is 2.30 pm**

WEEK 10 JUN 22 – JUN 26	ASSEMBLY
WEDNESDAY	Prep Farm Excursion
THURSDAY	THREE WAY INTERVIEW – Celebration of Learning 11am–6pm
FRIDAY	FINAL DAY OF TERM – 2.30 dismissal

FIND BELOW OUR TERM 3 PLANNER FOR PARENTS AND CARERS

TERM 3 WEEK 1- 10 2026 IMPORTANT DATES	
WEEK 1 JUL 13 – JUL 17 MONDAY THURSDAY	STUDENTS RETURN Grade 1 Ecolink
WEEK 2 JUL 20 – JUL 24 MONDAY ASSEMBLY	GRADE 5 HUMAN DEVELOPMENT Parent Information 6pm-7pm
WEEK 3 JUL 27 – JUL 31 WEDNESDAY - FRIDAY THURSDAY	Grade 5 Camp to Roses Gap PREP 1 2 BRAVEHEARTS Incursion
WEEK 4 AUG 3 – AUG 7 MONDAY ASSEMBLY WEDNESDAY	SWIMMING – YEAR 6 ICAS – Digital Technology and Writing PREP 100 Days Of School Celebration
WEEK 5 AUG 10 – AUG 14 MONDAY THURSDAY	SWIMMING – YEAR 6 ICAS – English SCIENCE FAIR Science Team Ecolinc Excursion
WEEK 6 AUG 17 – AUG 21 MONDAY ASSEMBLY THURSDAY	NATIONAL SCIENCE WEEK SWIMMING – PREP ICAS – Science and Spelling Bee National Science Week Planting Day
WEEK 7 AUG 24 – AUG 28 WEDNESDAY FRIDAY	SWIMMING – PREP and YEAR 5 ICAS – Mathematics WELLBEING at BMPS – Community Information Session MSO Excursion – YEAR 2 Senior School Summer Sports Day
WEEK 8 AUG 31 – SEPT 4 MONDAY ASSEMBLY TUESDAY THURSDAY FRIDAY	BOOK WEEK and BOOK FAIR SWIMMING – YEAR 5 Book Week Parade TBC Year 1 Ecolinc Book Week Incursion Father's Day Stall and Prep Father's Day afternoon
WEEK 9 SEPT 7 – SEPT 11 MONDAY WEDNESDAY	Year 3 Day Camp to Sunnystones Western Ranges Athletics
WEEK 10 SEPT 14 – SEPT 18 MONDAY ASSEMBLY FRIDAY	YEAR 6 PRODUCTION WEEK Year 6 Graduation Photo Last day of Term 3 FOOTY DRESS UP – HOTDOG DAY & 2.30 DISMISSAL



Western Metro Regional Cross Country

Last Monday, four of our fastest distance runners went to the Western Metro Cross Country event at Keilor Park. At this level of competition, runners typically train specifically for the event and are super fast! Most races had around 80 students, with Billy Basten our highest placed runner finishing 32nd. Well done also to Hunter Robinson, Kingsley Whiting and Grace Bonnici for representing our school so well.

Fantastic effort to reach the regional level!

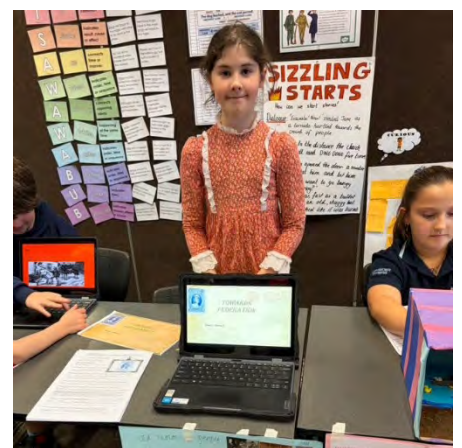
Dave Champness
PE & Sports Coordinator

Grade 5 Inquiry Expo

It was terrific to have many parents, carers and visitors significant to our students in the school last week to enjoy the Inquiry Expo.

Well done to our students for bringing together your knowledge of migration and life on the 1850's goldfields in a variety of ways and sharing it with our visitors.







CELEBRATE NAIDOC WEEK

TUESDAY 7 JULY

Wurundjeri Woi Wurrung Welcome to Country and Smoking Ceremony, followed by morning tea.

THE VILLAGE GREEN, BACCHUS MARSH 10AM

Basket Weaving with Donna Blackall.

Learn traditional basket weaving techniques and create your own unique piece to take home.

Bookings essential.

THE SUPPER ROOM, BACCHUS MARSH 11AM

FRIDAY 10 JULY

NAIDOC Week Craft

Celebrate NAIDOC Week with a special cultural craft activity at the library.

BALLAN LIBRARY, 2.30-3.30PM

Wadawurrung Welcome to Country and Smoking Ceremony, followed by afternoon tea.

BALLAN LIBRARY COURTYARD, 3.30PM

moorabool.vic.gov.au/events



NAIDOC WEEK
50 YEARS DEADLY
5-12 JULY 2026



ICAS 2026 Important Dates.

Get a head start on ICAS 2026 by putting these dates in your diary.

-  **Digital Technologies**
3 - 7 August
-  **Writing**
3 - 7 August
-  **English**
10 - 14 August
-  **Science**
17 - 21 August
-  **Spelling Bee**
17 - 21 August
-  **Mathematics**
24 - 28 August



School registrations for the Parent Payment System (PPS)

- Ensure your school registers for the PPS by **20 July 2026**.
- Parents have until **27 July 2026** to enter the competition.

School Direct Orders

- Schools must finalise direct entries by **27 July 2026**.

For more information, scan the QR code below to visit icasassessments.com or contact your ICAS Assessment Consultant.





IMPORTANT 2027 FOUNDATION/PREP ENROLMENT TIMELINE

Apply now to enrol your child in Foundation (Prep) for 2027

All Victorian government primary schools follow a statewide timeline for enrolling in Foundation (Prep) for the 2027 school year.

- If you have a child starting primary school in 2027, it's time to enrol. Make sure to submit your enrolment application by **Friday, July 31 2026**.

If you are enrolling the sibling of a student at our school for Foundation in 2027, and both children will be attending our school at the same time, your child is prioritised for a place at our school.

It is important to submit your enrolment application to us on time as it will ensure your child is included in all transition activities if offered enrolment at our school. This also allows us to plan our classrooms, staffing and transition activities, and ensures your child has the best start to school.

For more information, please read about how to enrol your child in Foundation at [Enrolling in Foundation \(Prep\) | vic.gov.au](https://www.vic.gov.au/enrolling-in-foundation-prep)

If you would like to enrol your child in Foundation (Prep) in 2027, please contact our school office on 03 5367 2745 or bacchus.marsh.ps@education.vic.gov.au to book a school tour or request an application form.

IMPORTANT!

SEMESTER 1 REPORTING CHANGES DUE TO INDUSTRIAL ACTION

We will be providing student achievement reports for Semester 1 this year, and the reports will be distributed at our 3 Way Celebration Interview in the last week of term on Thursday, June 25.

The reports will continue to provide important details of student learning attainment through a dot point, but full individualised descriptive comments, including personal and social learning overviews, will not be included as a result of industrial action taken earlier this term by the Australian Education Union.

Our students P-6 will all continue to write a personal reflection, and this will be included in their portfolio.

Please do not hesitate to make contact if you have any questions or queries relating to Semester One Reports.









ONGOING CONSISTENT MESSAGES:

DROP OFF ZONE – off Young Street

- CARS **MUST NOT PARK** IN THE DROP-OFF ZONE AS IT IS A KISS AND DROP AREA ONLY.
- VEHICLES ARE NOT TO BE LEFT UNATTENDED IN THIS SPACE
- PLEASE DO NOT ACCESS THE STAFF CARPARK AREA AT ANY TIME.

LERDERDERG STREET ENTRANCE

Thank you for your ongoing support with these changes:

- STUDENTS DO NOT USE THE FRONT ENTRANCE AS A THOROUGHFARE INTO OR OUT OF THE SCHOOL
- THE DRIVEWAY GATE ALONGSIDE THE ART ROOM WILL BE THE BREAKFAST CLUB AND MORNING ENTRANCE POINT
- PREP ENTRANCE WILL BE OPEN FROM 8.35 AM
- STUDENTS ARRIVING BEFORE 8.35 AM ARE ASKED TO WAIT IN THE UNDERCOVER AREA UNTIL DISMISSED.
- **FORMAL YARD SUPERVISION COMMENCES AT 8.35 AM**

BUS ZONES ON LERDERDERG STREET

All of the yellow line markings on the north and south sides of the street indicate **NO PARKING** before or after school to allow our buses to safely enter and exit the zone to collect our students.

Pulling up at the Prep entrance gate to collect students on Lerderderg Street is contravening the safety signage and impacting pedestrian and vehicle vision on our crossing. This blatantly ignores the safety rights of our school community.



**PLEASE DO NOT PARK
OVER DRIVEWAYS.**

**OUR NEIGHBOURS
HAVE ALWAYS
APPRECIATED THE
RESPECTFUL MANNER
IN WHICH OUR
COMMUNITY LIVE
OUR VALUES**



ALWAYS REACH OUT

- Thank you to parents and carers for reaching out to your child's classroom teacher or any of our staff below, if we can assist in any way.

Melinda Williams – Principal

Leanne Holt – Business Manager

Wellbeing:

Daniel Morris - Assistant Principal - Wellbeing & Engagement / Disability Inclusion

Bec Blokland - Disability Inclusion Co-ordinator

Liz Stonka – Assistant Principal – Daily Organisation /Student Medical Health & Wellbeing/Social Emotional Learning Curriculum

Tiff O'Brien – Leading Teacher – Mental Health in Primary Schools – Trauma Informed Practice - Art-Therapy

Belinda Horne - Wellbeing Educator

Literacy and Numeracy:

Catherine Moody – Assistant Principal - Curriculum / Teaching and Learning

Kirsty Younger - Leading Teacher – Literacy

Janaya Walker and Jayde Clayton – Leading Teachers – Numeracy

ONGOING ACCESS TO OUR WEEKLY UPDATES

Note – All Updates are saved to our website for easy access at any time across the term.

<https://bacchusmarshps.vic.edu.au/newsletter>

All the best for a great final week of term, from the BMPS team.

Supporting Growth, Confidence & Wellbeing

Inspiring Potential Life Coaching



Empowering Women To Thrive

Feeling disconnected from yourself? Caught in the whirlwind of endless to-do lists or weighed down by negative self-talk?

You're not alone — and that's where our journey begins.

Join the Empowering Women To Thrive program — a 10-session journey of self-discovery and growth designed to help you reconnect, rebuild confidence, and create space for yourself without guilt. Learn to let go of the past, reshape your inner story, and set healthy boundaries so you can live with more clarity, gratitude, and fulfilment.

What's Included:

- 10 x Coaching Sessions (via Zoom) – Personalised guidance and support
- Worksheets & Resources – Tools to support your growth
- Private Facebook Group – A community of like-minded women
- Weekly Check-ins – Stay accountable and celebrate wins
- Welcome Gift Pack – A special token to mark your journey

Rediscover your confidence, balance, and joy — and start thriving today.

2026 Women's Seasonal Retreats

Element of You is a four-part journey designed to help you reconnect with yourself throughout the rhythm of the year. Each seasonal retreat blends intentional activities, meaningful reflection, creativity, and nurturing space to support your personal growth. With thoughtful gifts, guided practices, and a full-day immersive experience from 10:00 a.m. to 4:00 p.m., these retreats invite you to explore your inner landscape in harmony with the Earth's natural cycles—location Ballan Scout Hall. Each retreat is \$150 per retreat, or contact us for a special series discount.

Join the full series or simply come along to the seasons that speak to you. Contact us to learn more.



📍 Based in Ballan – sessions available in person or online
 🌐 www.inspiringpotentiallife.com
 ☎ 0438 891 579

Get in Touch Today

To find out more contact us by visiting our website.



2026 Junior Development Program

Get a head start over Winter, join the Softball Victoria Junior Development Program tailored to beginner to intermediate skilled players from 7 to 15 years of age, and develop fundamental skills and game sense leading into the 2026/2027 Summer season!

Venues across metro Melbourne and Regional Victoria, visit the website or scan the QR code for further details

- ✓ Learn from experienced coaches and state representative players
- ✓ Experience and develop the different elements of Softball including batting, fielding, pitching, catching and base running
- ✓ 2 hours each week over 6 weeks
- ✓ \$90 registration includes participant pack with T-shirt, cap & drink bottle

Shaping Tomorrow's Softball Stars

REGISTER HERE:
www.softballvic.org.au/events/363067



Contact: Tim Hatzi - State Participation & Development Manager email: tim.hatzi@softballvic.org.au or ph: 0479 104 403

School Holiday Softball Program

Unlock your Softball potential these July School holidays, with this fun and engaging program, designed for kids of all skill levels aged 7-14

Programs across metro Melbourne on various days, times and venues, visit the website or scan the QR code for further details



REGISTER HERE:
www.softballvic.org.au/events/363049

CONTACT: Tim Hatzi - State Participation & Development Manager
Email: tim.hatzi@softballvic.org.au
or Ph: 0479 104 403



About

- 4 hour duration ✓
- Experienced Coaches ✓
- Equipment Provided ✓
- Safe & Inclusive & Fun Environment ✓





NEW
**PLAYERS
WANTED**

**WE ARE SEEKING ADDITIONAL PLAYERS
FROM 5-19 YEARS OLD**

**ENJOY THE FUN & EXCITEMENT OF
BASKETBALL, FOR MORE INFO EMAIL:
admin@bmbasketball.org.au**

**SATURDAY
U8-U14s**

**TUESDAY
U16-U18 BOYS
U16-U20 GIRLS**

**THURSDAY
U21 BOYS, SENIOR
MEN & WOMEN**

Western VACCA

Deadly Kids

Come along to our Deadly Kids Melton Group!

For children aged 8-12

A range of activities delivered in a culturally safe and supportive way participate in peer to-peer learning and interaction to boost their confidence with navigating their relationships.

Fortnightly on Tuesdays

(Group 1 from February 3rd / Group 2 from February 10th)

Time: 4.00pm – 5.30pm

Kurunjang Community Hub

33 Mowbray Cres, Kurunjang VIC 3337

If transport is needed please contact:

Lillyarnna G

e. lillyarnnaG@vacca.org

VACCA Melton

43 Bakery Square, Melton VIC 3337

p. (03) 8746 2776

VACCA Werribee

Ground Floor, 75-79 Watton Street, Werribee VIC 3030

p. (03) 9742 8300

w. vacca.org e. vacca@vacca.org

    @vaccaorg



VACCA

VICTORIAN ABORIGINAL CHILD
AND COMMUNITY AGENCY

WESTERN



Western VACCA - Melton

Koala Kubs Koorie Club



EVERY THURSDAY

Starting Thursday 12th February
(During School Terms)

Time: 3.30pm - 5.00pm

Location: Binap Primary School
11 Grand Scenic Drive, Brookfield VIC 3338

Welcoming all Aboriginal and Torres Strait Islander
students from Prep to Grade 6 across the Melton area

Only 20 spots available

Family Friendly

Light snacks will be provided each session

Please RSVP attendance by contacting:

e. vaccawestkooariwellbeingways@vacca.org

p. (03) 9742 8300 m. 0428 951 597



VACCA
VICTORIAN ABORIGINAL CHILD
AND COMMUNITY AGENCY
WESTERN

VACCA Melton

43 Bakery Square, Melton VIC 3337

p. (03) 8746 2776 w. vacca.org e. vacca@vacca.org



@vaccaorg

Early Childhood Development

KOORIE KIDS PLAYGROUP



Come and join us at VACCA's
Koorie Kids Playgroup in a culturally
safe, fun and empowering environment for
families with children aged 5 years and under.

Koorie Kids Playgroup is a great place for children and their Mums, Dads and Carers to:

- Gather with other Koorie families • Make new friends • Hear stories
- Participate in cultural arts, crafts and dance • Express creativity • Learn about culture
- Get to know other Koorie Kids in the area

Playgroup will provide a healthy snack at each session.

For further information please contact
VACCA Melton (03) 8746 2776 or VACCA Werribee (03) 9742 8300

Please send referrals directly to
vaccawestkoriekidsplaygroup@vacca.org

DURING SCHOOL TERMS

Mondays 12:00pm - 2:00pm **St Albans Koorie Kids Playgroup**
Westvale Community Centre, 45 Kings Rd, **Kings Park** VIC 3021

Tuesdays 12:00pm - 2:00pm **Point Cook Koorie Kids Playgroup**
153 Saltwater Promenade, **Point Cook** VIC 3030

Wednesdays 12:30pm - 2:30pm **Melton Koorie Kids Playgroup**
Botanica Springs Children's and Community Centre, 249 Clarkes Road, **Brookefield** VIC 3338

Thursdays 12:00pm - 2:00pm **Wyndham Vale Koorie Kids Playgroup**
Wunggurrwil Dhurrung Community Centre
19 Communal Road, **Wyndham Vale** VIC 3024

VACCA Melton

43 Bakery Square, Melton VIC 3337
p. (03) 8746 2776

VACCA Werribee

Ground Floor, 75-79 Watton Street, Werribee VIC 3030
p. (03) 9742 8300

w. vacca.org e. vacca@vacca.org



@vaccaorg



VACCA

VICTORIAN ABORIGINAL CHILD
AND COMMUNITY AGENCY

WESTERN



Western VACCA

Indigenous Horticulture Program

Running weekly on Tuesdays

Starting Tuesday 10th February

Session times: 10.00am–2.00pm

ACAH Demonstration Farm

25 Whites Rd Werribee South VIC 3030

**In association with ACAH, VACCA
are offering Certificate IV in Production
– Specialising Indigenous Food Production**

This program is suitable for ages 14+ years.

For more information or to RSVP please contact:

e. vaccawestkooriwellbeingways@vacca.org

p. (03) 9742 8300 m. 0428 951 597



VACCA Melton
43 Bakery Square, Melton VIC 3037
p. (03) 8746 2776

VACCA Werribee
Ground Floor, 75-79 Watton Street, Werribee VIC 3030
p. (03) 9742 8300

W. vacca.org e. vacca@vacca.org

f m o @vacca.org



VACCA

**VICTORIAN ABORIGINAL CHILD
AND COMMUNITY AGENCY**

WESTERN



Western VACCA WOMENS GROUP

A culturally safe space for having a yarn
and sharing stories whilst participating
in cultural activities.

Runs weekly from
Thursday 12th February

Time: 9.30am - 1.30pm

Wunggurwil Dhurrung Community Centre
19 Communal Road, Wyndham Vale, VIC 3024

The program welcomes all Aboriginal and Torres Strait Islander women aged 18 years and up.

For more information or to RSVP please contact:

e. vaccawestkooriwellbeingways@vacca.org

p. (03) 9742 8300

m. 0428 951 597



VACCA Melton
43 Bakery Square, Melton VIC 3337
p. (03) 8746 2776

VACCA Werribee
Ground Floor, 75-79 Watton Street, Werribee VIC 3030
p. (03) 9742 8300

w. vacca.org **e.** vacca@vacca.org

    @vaccaorg



VACCA
VICTORIAN ABORIGINAL CHILD
AND COMMUNITY AGENCY
WESTERN

Cafs Early Help Program

Onsite supports available for your family!

Our Cafs Early Help Practitioners are working with schools to provide support to parents, carers and children in their communities!

Come have a chat with our onsite practitioner if your seeking more information about supports in the community for your child and family!

We help families with:

- Exploring GP and Paediatrician assessment.
- Connecting you to local professionals surrounding your child's developmental needs.
- Exploration and advice for accessing professional supports regarding Neurodiversity.
- Community engagement
- And more!



See your school for a warm introduction to our onsite team!

Autism Connect

Autism Connect is an expansion of Amaze's Autism Advisor service delivered in Victoria for 12 years, helping over 20,000 people.

Autism Connect is available to anyone seeking support related to autism. The service was created for autistic people seeking guidance around diagnosis and services, their families or friends, and anyone supporting an autistic adult or child in education, health settings or workplaces.

"I got diagnosed at age 40 and I found that really enlightening and validating. You've got the ability to send a five-second message and then get a human response. They were friendly, patient and empathetic. They were really just nice to deal with on the phone and it felt like the easiest thing ever."

- Catherine, Autistic mother of 2 autistic boys.



**For more information, visit
amaze.org.au/autismconnect**



If you need an interpreter, contact the TIS National Contact Centre on 131 450 and ask to speak to Autism Connect on 1300 308 699.

Autism Connect is funded by the Australian Government Department of Social Services



SHINDO KARATE

心道空手



BACCHUS MARSH, MELTON, WEIR VIEWS & GISBORNE

WHAT WE OFFER:
AGE SPECIFIC PROGRAMS
FAMILY FRIENDLY ENVIRONMENT
GOVERNMENT ACCREDITED INSTRUCTORS



All from the beginning, a free spirit

CONTACT US TODAY!



0425 759 164



**SHINDO KARATE ACADEMY
BACCHUS MARSH
MELTON & GISBORNE**



JUST FOR THE GIRLS



GOOD CLEAN FUN

PLAY.AFL/AUSKICK

DARLEY ALL GIRLS AUSKICK GROUP

Darley Park Reserve, Darley

MONDAYS 5PM - 6PM

Starts 20th April 2026





 |  
superkick

ANYBUDDY CAN PLAY

[PLAY.AFL/SUPERKICK](https://play.afl.com.au/superkick)

DARLEY SUPERKICK CENTRE

Darley Park, Darley

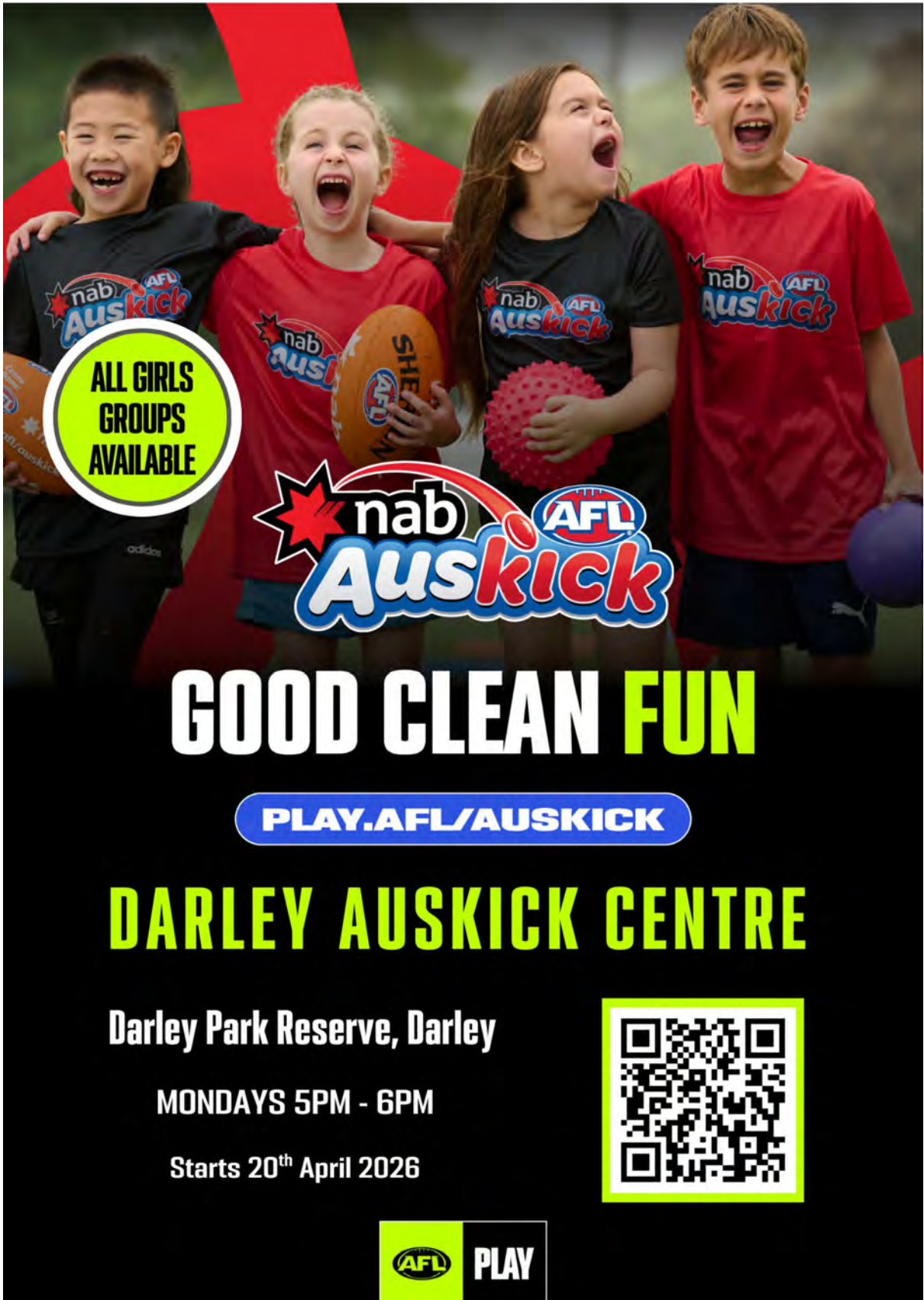
Mondays 5PM - 6PM

Starts 20th April 2026



AFL

PLAY



ALL GIRLS
GROUPS
AVAILABLE



GOOD CLEAN FUN

PLAY.AFL/AUSKICK

DARLEY AUSKICK CENTRE

Darley Park Reserve, Darley

MONDAYS 5PM - 6PM

Starts 20th April 2026

